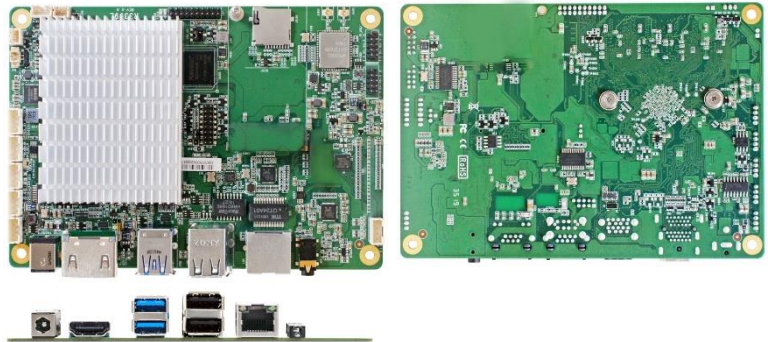


JR3399XL-2C

Rockchip® ARM Cortex A72+A53 RK3399, 1* RJ45

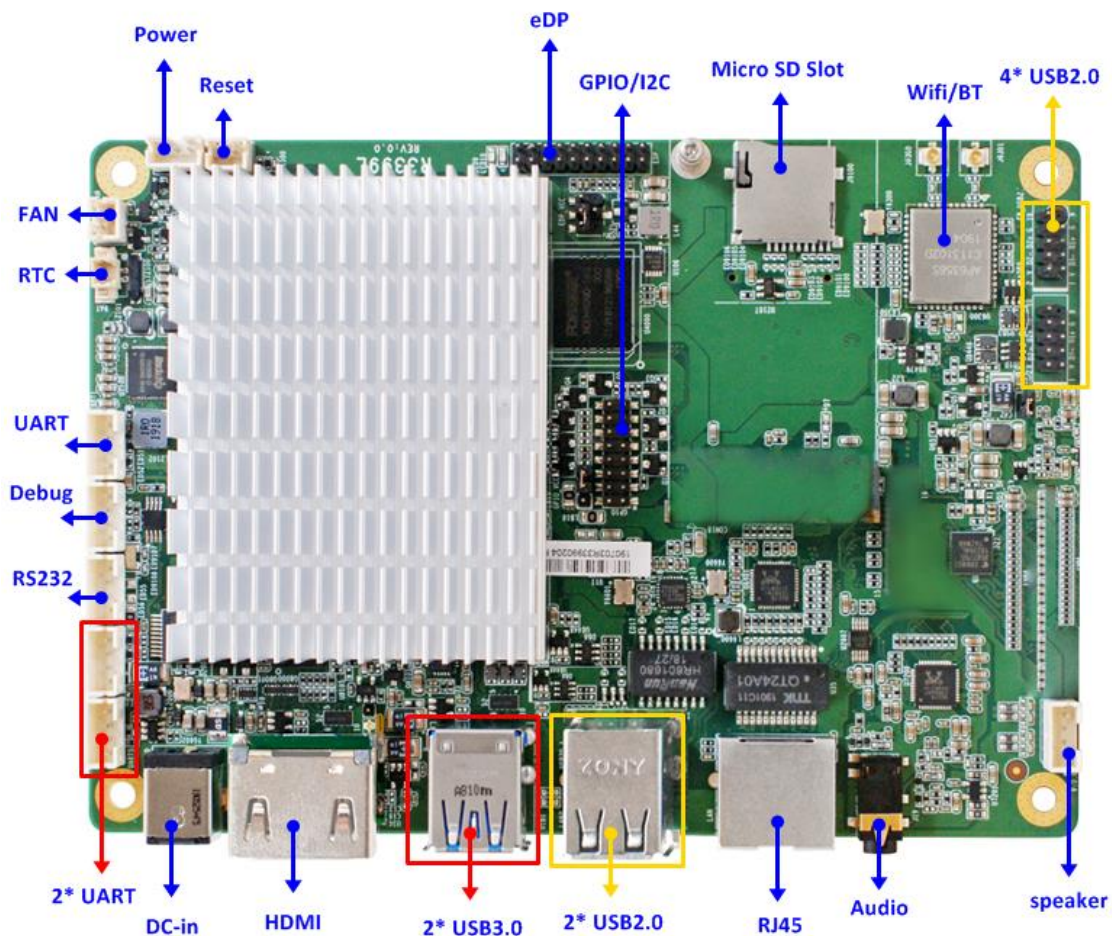
1. Rockchip® ARM Cortex A72 (Dual Core 1.8GHz) + Cortex A53 (Quad Core 1.4GHz)
2. On board 1333/2GB DDR3L DRAM
3. On board 16G Flash ROM (Max. 64GB)
4. Support WIFI and Blue Tooth
5. 1* Realtek GbE, 3* UART, 1* RS232, 2* USB3.0, 6* USB2.0, 1* OTG (Co-lay USB3.0)
6. 1* HDMI2.0, 1* eDP
7. Support 4K H.264/H.265 video decoding, up to 60fp 10bits coding
8. Support 1080P H.264 format video encoding
9. 1* Micro SD Max 256GB
10. Support Android 7.1, Debian9.0



Application

Digital Signage/ Automation Equipment

I/O Diagram



Specifications

| | |
|---|---|
| Model | Form Factor |
| JR3399XL-2C | 102 * 146mm |
| Processor System | Expansion Slot |
| <ul style="list-style-type: none">• Rockchip® ARM Cortex A72 (Dual Core) +Cortex A53 (Quad Core)• A72 up to 1.8GHz, A53 up to 1.4GHz• Rockchip® RK808-D PMU | 1* Micro SD slot |
| Memory | Graphics |
| Onboard DDR3L 1333MHz 2GB | <ul style="list-style-type: none">• Mali T860MP4 GPU, OpenGL ES1.1/2.0/3.0, OpenCL1.2, DirectX11.1• 1* HDMI (Max Resolution: 3840x2160@60Hz)• 1* eDP (Max Resolution: 4096x2304@60Hz)• Support Dual Displays |
| Ethernet | Audio |
| <ul style="list-style-type: none">• 1* Realtek RTL8211E GbE• 1* AMPAK AP6356S 802.11 a/b/g/n/ac 2.4/5G WIFI and BT-V4.1 | 2 channel HD audio: ALC5640 |
| Storage | Rear I/O |
| 16GB Flash ROM (Max 64GB) | <ul style="list-style-type: none">• 1* DC Jack (12V)• 2* USB3.0 (Co-lay OTG)• 2* USB2.0• 1* HDMI2.0• 1* AUDIO (Line-out +MIC)• 1* RJ45 |
| Internal Connector | Watchdog Timer |
| <ul style="list-style-type: none">• 4* USB2.0• 3* UART, 1* RS232, 1* Debug• 1* eDP• 1* Speaker (3W AMP)• 1* GPIO (8 bit)• 1* I2C• 1* Power BT (Header)• 1* Reset BT (Header)• 1* CPU FAN (Header) | <ul style="list-style-type: none">• From Super I/O to drag RESETCON#• 256 segments (0~255 sec) |
| Power | Compliance |
| 12V DC-in (PWR Con) - AT : Directly PWR on as Power input ready - ATX: Press Button to PWR on after Power input ready | CE, FCC, LVD, RoHS, REACH |
| Temperature | Warranty |
| <ul style="list-style-type: none">• Operating: -10°C ~ 60°C• Storage: -20°C ~ 70°C | 2 Years Limited Warranty |

* Specifications subject to change without notice, not responsible for typographical errors. Does not include HDD or OS.

OS Support List

| SKU | Android | Linux |
|--------|---------|------------|
| RK3128 | 5.1 | |
| RK3288 | 9.0 | Debian 9.0 |
| RK3328 | 7.1 | |
| RK3399 | 7.1 | Debian 9.0 |

Standard Accessories

| Parts Number | Description | Parts Number | Description |
|--------------|-----------------|--------------|-------------|
| ----- | JR3399XL-2C M/B | | |