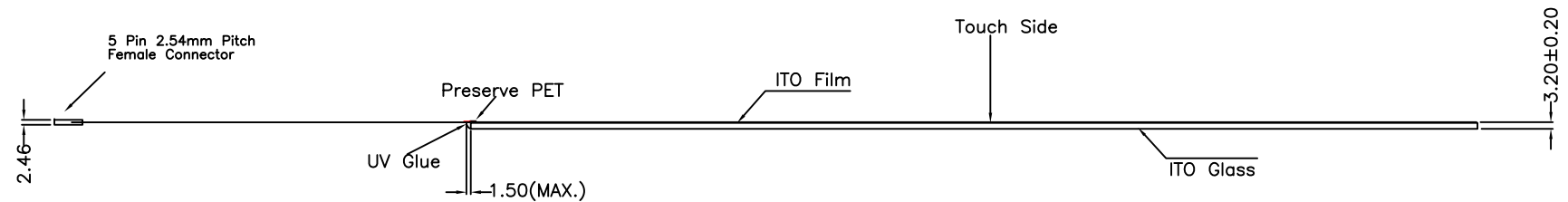
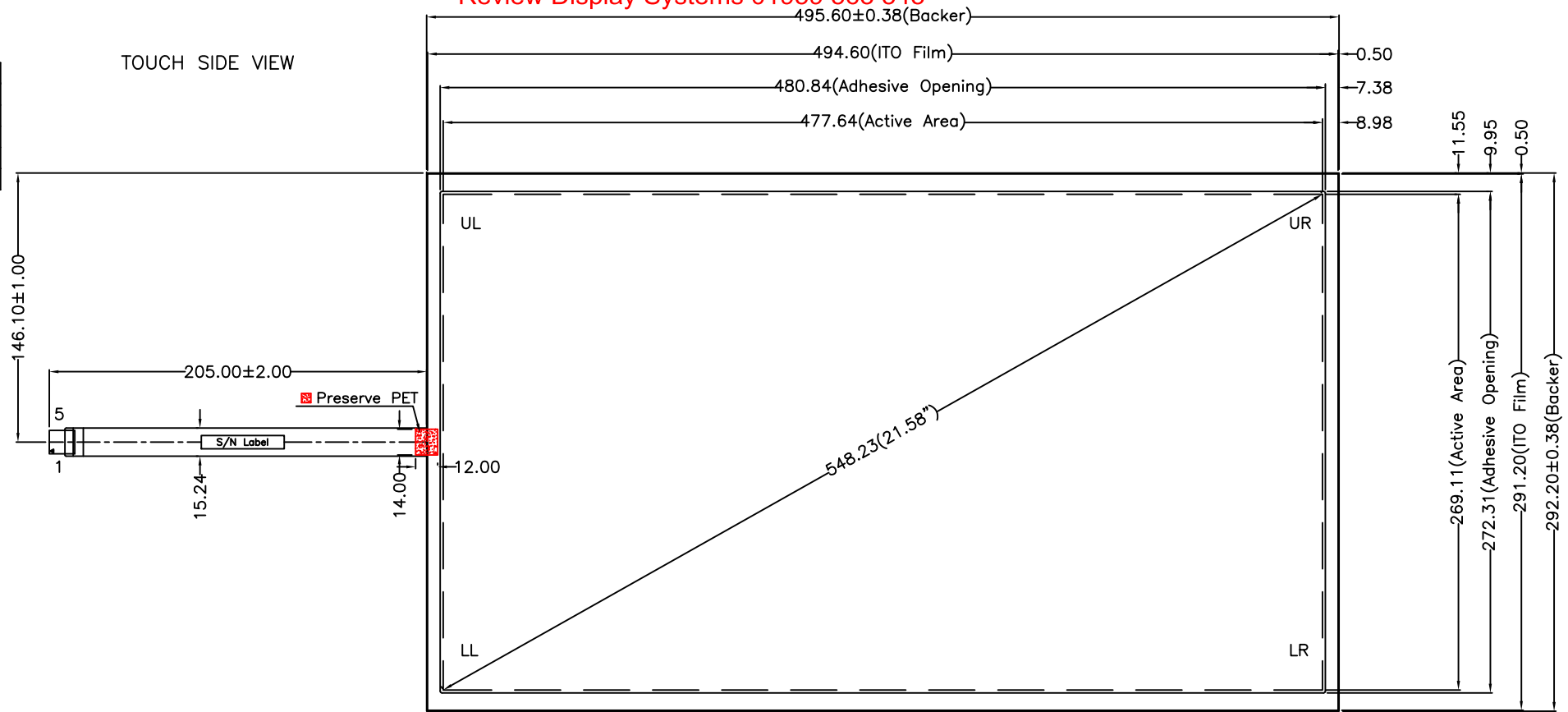


Review Display Systems 01959 563 345

Pin#	Assignment
1	LL
2	LR
3	S
4	UL
5	UR

TOUCH SIDE VIEW



NOTES:

1. ITO GLASS THICKNESS : 2.80mm
2. OVERALL THICKNESS : 3.20±0.20mm
3. CONNECTOR AND PINOUT AS INDICATED
4. FRONT SURFACE : ANTI-GLARE HARDCOAT
5. TAIL TYPE : FPC WITH CONNECTOR AMP-COMPATIBLE ELECTRO TIN PLATED CONTACT
6. OTHER SPEC : SEE APPROVAL SHEET



NO.	DATE	DESCRIPTION	CHK
REVISION			
CHIEF OF DESIGN		APPROVED	Grace
ENGINEER		PROJECT MANAGER	
DRAWN BY	Jackson	DATE	JUL 28, 2011
SHT	1	OF	1
REV.			0

Apex Material Technology Corp.

TOLERANCES UNLESS SPECIFIED		MODEL NAME : 2535-00 DWG NO : 2535-0-013 SCALE: 1:1 UNIT: mm
.X	± 0.50	
.XX	± 0.50	
.XXX	± 0.30	
ANGULAR	.	