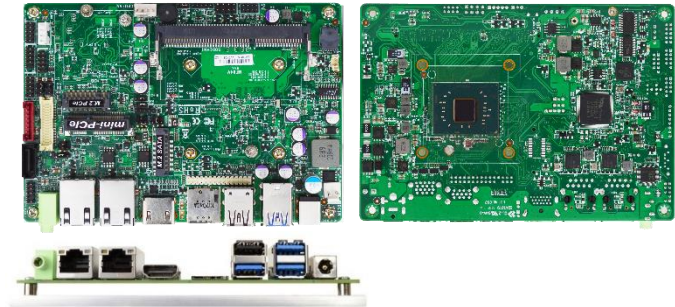


## MF94V Series

Intel® Apollo Lake SoC processor, DDR3L up to 8GB, 1\* M.2 (M-key), 1\* M.2 (B-key), 2\* 2.5GbE, 9~36V DC-in

1. Intel® Apollo Lake SoC Processor
2. 1\* DDR3L 1866MHz SO-DIMM up to 8GB
3. 2\* 10/100/1000/2500 Base-TX Ethernet Ports
4. 1\* HDMI, 1\* eDP, 1\* LVDS
5. 2\* COM, 3\* USB3.1 (Gen.1), 3\* USB2.0
6. 1\* M.2 M-key 2242, 1\* M.2 B-key 3042 W/SIM card holder
7. 1\* Full size Mini-PCIe, 1\* SATA III (6Gb/s)
8. Support 9~36V DC-in



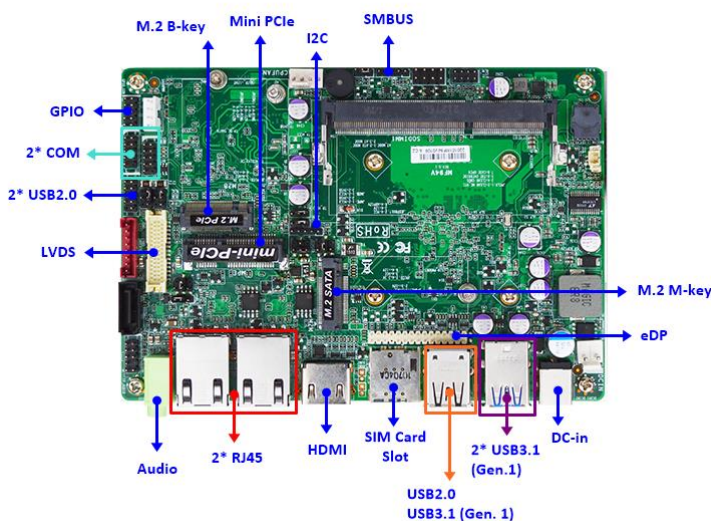
### Overview

The JETWAY MF94V is 3.5" form factor board adopts the Intel® Apollo Lake SoC Processor. The board supports one SO-DIMM DDR3L 1866MHz memory, up to 8GB. Featuring the integrated two Intel® 2.5 Gigabit Ethernet controller, the MF94V offers two 10/100/1000/2500Base-TX Ethernet device for network transmission. One SATAIII (6Gb/s) interface and one M.2 M-key offer storage devices. Three USB3.1 Gen.1 ports, Three USB2.0 ports and two COM ports provide versatile expansion. The M.2 B-key 3042 can support 3G/4G/LTE. The MF94V offers one HDMI port, one eDP port and one LVDS. Because of the above features, MF94V is suitable for Panel PC, IOT Solution applications.

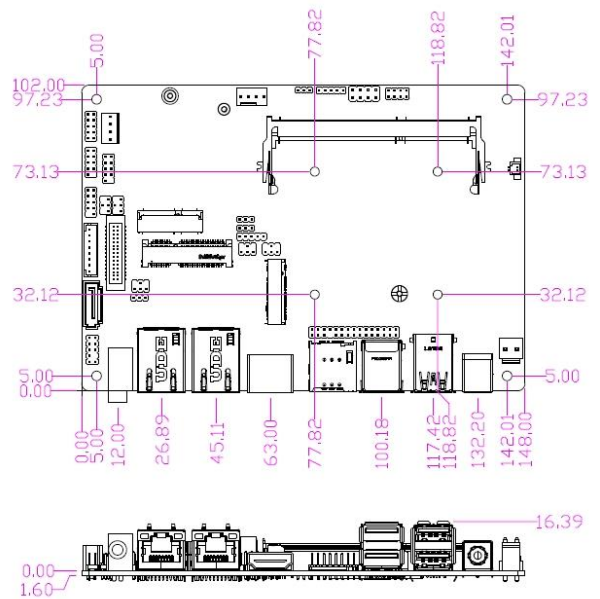
### Application

Panel PC / IOT Solution

### I/O Diagram



### Mechanical Drawings (Unit = mm)



## Specifications

### Model

- MF94V00 (J3455 CPU\_10W, Default)
- MF94V90 (E3940 CPU\_9.5W)

### Processor System

- Intel® Apollo Lake J3455 / E3940 SoC Processor (TDP 10W/9.5W)
- AMI Flash ROM BIOS

### Memory

1\* SO-DIMM DDR3L 1866MHz SDRAM non-ECC up to 8GB

### Ethernet

2\* Intel® 2.5GbE (2\* i225-V)

### Storage

1\* SATAIII

### Rear I/O

- 3\* USB3.1 (Gen1)
- 1\* USB2.0
- 1\* HDMI
- 2\* RJ45
- 1\* SIM card slot (W/M.2 B-key, 3042)
- Line-Out
- DC-in (9~36V)

### Watchdog Timer

- From Super I/O to drag RESETCON#
- 256 segments (10sec ~ 255min)

### Compliance

CE, FCC, LVD, RoHS, REACH

### Warranty

2 Years Limited Warranty

\* Specifications subject to change without notice, not responsible for typographical errors. Does not include HDD or OS.

### Form Factor

3.5" (5.8-in \* 4.0-in, 148 \* 102mm)

### Expansion Slot

- 1\* M.2 M-key (2242) Support SATA interface
- 1\* M.2 B-key (3042) Support USB3.0 & PCIe1 interface W/SIM card holder
- 1\* Full size Mini-PCIe Support USB2.0 & PCIe1 interface

### Graphics

- Intel® HD Graphics, shared memory
- 1\* eDP (Max Resolution: 4096x2304@60Hz)
- 1\* LVDS (Max Resolution: 1920 x 1080@60Hz)
- 1\* HDMI (Max Resolution: 3840x2160@ 30Hz)

### Audio

6 channel HD audio: Realtek® ALC888S

### Integrated Storage

N/A

### Internal Connector

- 2\* USB2.0
- 1\* eDP
- 1\* LVDS w/ Inverter
- 1\* RS232
- 1\* RS232/422/485
- 1\* SATAIII
- 1\* GPIO (8 bit)
- 1\* Audio Header
- 1\* SMBUS
- 1\* I2C
- 1\* CPU FAN
- 1\* TPM2.0 onboard (option)

### Power

DC-IN 9~36V

AT/ATX mode Supported

- AT: Directly PWR on as Power input ready

- ATX: Press Button to PWR on after Power input ready

### Temperature

- Operating: MF94V00: 0°C ~ 60°C  
MF94V90: -40°C ~ 85°C
- Storage: -40°C ~ 85°C

## Standard Accessories

Part Number	Description	Q'ty
	MF94V M/B	1
G01-COM-H2M22-1F	COM cable	2
G01-PW4PS-2S-322F	SATA PWR cable	1
G01-SATA3-BL-1F	SATA cable	1