

Data Sheet

Customer: _____

Product: SMD Aluminum Electrolytic Capacitors – EZV Series _____

Size : 4x5.5mm ~ 18x21.5mm _____

Issued Date: 25-Dec.-2018 _____

Edition: Ver. 3 _____

Record of change

| Date | Ver. | Description | Page |
|-------------|------|-------------------------------|------|
| 15-May-2016 | 1 | | |
| 07-Sep-2017 | 2 | Added size G on some items | 2 |
| 22-May-2018 | 3 | Added new sizes | 2 |
| 01-Dec-2019 | 4 | EOL 100/35V 10X10.5 | 2 |
| 11-JUN-2021 | 5 | EDIT 1000/50 SIZE R.C. & IMP. | 3 |

HITANO ENTERPRISE CORP.

7F-7, No. 3, Wu Chuan 1st Road, New Taipei Industrial Park,

New Taipei City, TAIWAN, R.O.C.

Tel: +886 2 2299 1331 (Rep.)

Fax: +886 2 2298 2466, 2298 2969

| Prepared by | Checked by | Approved by | Accepted by (customer) |
|-----------------|---------------|---------------|------------------------|
| 22-May-2018 | 22-May-2018 | 22-May-2018 | |
| <i>Andy Hsu</i> | <i>Hwa Wu</i> | <i>Hwa Wu</i> | |

- SMD Low Impedance Type. Reflow Soldering is available.
- 4~18φ, 105°C, 2000 ~ 5000 hours load life., Rohs compliant
- Available For High Density Mounting

Characteristics

| | | | | | | | | | |
|---|--|--------------------|------|------|---|------|------|------|------|
| Voltage Range | 6.3 to 100 VDC | | | | | | | | |
| Capacitance Range | 1.0 to 6800uF | | | | | | | | |
| Temperature Range | -55 to +105°C | | | | | | | | |
| Capacitance Tolerance | +/-20% (at 20°C, 120Hz) | | | | | | | | |
| Leakage Current | I≤0.01CV or 3uA, whichever is greater, 2 minutes after Rated Voltage applied, where C = Rated Capacitance, V = Rated DC working voltage | | | | | | | | |
| Dissipation Factor (tanδ) Max (at 20°C, 120Hz) | Rated Voltage (V) | 6.3 | 10 | 16 | 25 | 35 | 50 | 63 | 100 |
| | D.F.(tanδ) | 0.30 | 0.26 | 0.22 | 0.16 | 0.13 | 0.10 | 0.08 | 0.07 |
| Stability at Low Temperature (at 120Hz) | Rated Voltage (V) | 6.3 | 10 | 16 | 25 | 35 | 50 | 63 | 100 |
| | Z-25°C/Z 20°C | 4 | 3 | 2 | 2 | 2 | 2 | 2 | 2 |
| | Z-55°C/Z 20°C | 8 | 5 | 4 | 3 | 3 | 3 | 3 | 3 |
| Load Life After the rated voltage has been applied for 2000~5000 hours at 105°C | 2000hrs for D ≤ 6.3mm, 5000hrs for D ≥ 8mm | Capacitance change | | | Within ±30% of initial value | | | | |
| | | D.F. (tanδ) | | | 300% or less of initial specified value | | | | |
| | | Leakage current | | | Less than initial specified value | | | | |
| Shelf Life | After storage for 1000 hours at 105°C, with no voltage applied and being stabilized at +20°C, Capacitor shall meet the limit specified in load life. | | | | | | | | |

Diagram of dimensions

| SIZE | Dφ | L | A | B | C | W | P±0.2 |
|------|------|----------|------|------|------|---------|-------|
| A | 4 | 5.5±0.2 | 4.3 | 4.3 | 5.1 | 0.5~0.8 | 1.0 |
| B | 5 | 5.5±0.2 | 5.3 | 5.3 | 5.9 | 0.5~0.8 | 1.5 |
| C | 6.3 | 5.5±0.2 | 6.6 | 6.6 | 7.2 | 0.5~0.8 | 2.0 |
| C8 | 6.3 | 7.7±0.3 | 6.6 | 6.6 | 7.2 | 0.5~0.8 | 2.0 |
| D | 8 | 6.5±0.3 | 8.4 | 8.4 | 9.0 | 0.5~0.8 | 2.3 |
| E | 8 | 10.5±0.3 | 8.4 | 8.4 | 9.0 | 0.7~1.1 | 3.1 |
| F | 10 | 10.5±0.3 | 10.4 | 10.4 | 11.0 | 0.7~1.3 | 4.5 |
| G | 12.5 | 14±0.3 | 13.5 | 13.5 | 15.0 | 1.1~1.4 | 4.5 |
| H | 12.5 | 16±0.3 | 13.0 | 13.0 | 15.0 | 1.1~1.4 | 4.5 |
| I | 16 | 16.5±0.5 | 17.0 | 17.0 | 18.0 | 1.1~1.4 | 6.4 |
| J | 16 | 21.5±0.5 | 17.0 | 17.0 | 18.0 | 1.1~1.4 | 6.4 |
| K | 18 | 16.5±0.5 | 19.0 | 19.0 | 20.0 | 1.1~1.4 | 6.4 |
| L | 18 | 21.5±0.5 | 19.0 | 19.0 | 20.0 | 1.1~1.4 | 6.4 |

Size A~F refer to Fig. 1

Size G~L refer to Fig. 2

Fig. 1

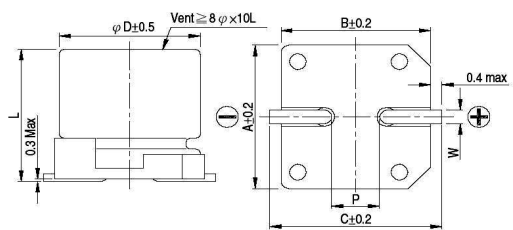
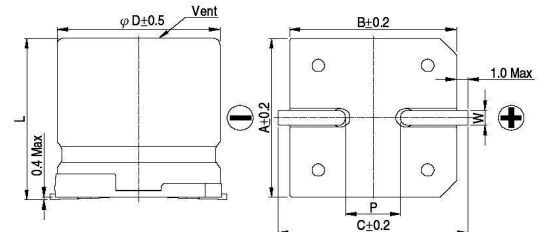


Fig. 2



Multiplier for Ripple Current vs Frequency

| Frequency(Hz) | 60(50) | 120 | 1K | ≥10K |
|-------------------|--------|------|------|------|
| Multiplier | 0.60 | 0.70 | 0.85 | 1.00 |

Part Numbering System

EZV □ □ □ □ □ □ R □
Series Capacitance Tolerance Rated Voltage Package Case Size

